

**VIRTUAL REALITY IS RESHAPING THIS ENTIRE SEGMENT**

PREVAILPRO P4000 VR-Ready mobile workstations are an ideal solution for AEC professionals – from initial concept and design to construction sites

- Mobile workstation performance and capabilities let you take concepts and designs to clients, subcontractors or construction sites as necessary.
- Moving from traditional blueprints and physical models to a digital workflow becoming a competitive necessity across AEC.
- Immersive Virtual Reality (VR) provides the context and scale needed to fully understand and optimize designs or rapidly address on-site construction challenges.
- Photorealistic rendering reproduces the subtlest nuances of materials and lighting, shortening the design process, and allowing the exploration of more creative options.
- Leading AEC software vendors certify their solutions for Quadro-based systems.

**IDEAL FOR**



**COST REDUCTION**



**VR**



**RENDERING**



**DESIGN**

**EXTREME PERFORMANCE**

NVIDIA Pascal architecture delivers better visualization and compute performance than the previous generation of Quadro products.

**FASTER DATA**

Quadro Pascal supports GDDR5 the latest high performance graphics memory technologies that provide significantly more memory bandwidth than previous generation technology.

**ADVANCED GPU FEATURES**

VR specific features (P4000) significantly improve VR performance enabling the most detailed life-like VR experience possible. Enhanced workload balancing improves graphics and compute interoperability.



**QUADRO P3000 MOBILE GPU**

**1280** CUDA Cores  
**6GB** GDDR5

**EXPAND YOUR VISUAL WORKSPACE**

Expand your visual workspace with up to 3 external 4K UHD displays (3840 x 2160 at 60Hz) with HDR color support that lets you view your creations in stunningly life like and vivid detail.



**QUADRO P4000 MOBILE GPU**

**1792** CUDA Cores  
**8GB** GDDR5

**SEVENTH GENERATION INTEL i7 PROCESSOR**

The Intel® Core™ i7 7700HQ runs multiple CPU-intensive applications simultaneously while delivering the performance and interactivity you require.

**THIN & LIGHT DESIGN**

Carry your mobile workstation with ease, the ultra-low profile design is only 0.73" thick (18mm) and only weighs 4.8 lbs (2.2kg).



**0.73"**

**4.8** lbs

	P3000 BASE	P3000 UPGRADED PRO	P4000 UPGRADED PRO
<b>PART NUMBER</b>	MWS-P3B-ENUSP1-PB	MWS-P3P-ENUSP-PB	MWS-P4P-ENUSP-PB
<b>MEMORY</b>	16GB (2 × 8GB) DDR4 2400MHz SODIMM	32GB (2 × 16GB) DDR4 2400MHz SODIMM	32GB (2 × 16GB) DDR4 2400MHz SODIMM
<b>PRIMARY STORAGE</b>	128GB M.2 2280 PCIe (Gen. 3×4) NVMe SSD	512GB M.2 2280 PCIe (Gen. 3×4) NVMe SSD	512GB M.2 2280 PCIe (Gen. 3×4) NVMe SSD
<b>SECONDARY STORAGE</b>	1TB 2.5" Hard Disk Drive	2TB 2.5" Hard Disk Drive	2TB 2.5" Hard Disk Drive
<b>DISPLAY</b>	15.6" FHD (1920 × 1080)	15.6" UHD (3840 × 2160)	15.6" UHD (3840 × 2160)
<b>ASPECT RATIO</b>	16:9 Panel		
<b>PROCESSOR</b>	Intel® Core™ i7-7700HQ processor		
<b>PROCESSOR SPEED</b>	2.8GHz Base (Boost Up to 3.8GHz)		
<b>PROCESSOR CACHE</b>	6MB Smart Cache		
<b>CORE LOGIC</b>	Mobile Intel® HM175 Express Chipset		
<b>MEMORY</b>	<ul style="list-style-type: none"> <li>• Dual channel DDR4, supports up to 2400MHz</li> <li>• Two 260 pin SODIMM sockets</li> <li>• Expandable memory from 16GB to 32GB</li> </ul>		
<b>PROFESSIONAL GPU</b>	<b>NVIDIA Quadro Mobile P3000</b> <ul style="list-style-type: none"> <li>• 6GB GDDR5 GPU Memory</li> <li>• OpenGL 4.5</li> <li>• DirectX® 12</li> <li>• Vulkan compatible</li> <li>• CUDA™, OpenCL, Direct</li> <li>• Compute compatible</li> </ul> <b>Microsoft Hybrid Graphics Mode</b> <ul style="list-style-type: none"> <li>• Supports 4 active displays</li> </ul>	<b>NVIDIA Quadro Mobile P4000</b> <ul style="list-style-type: none"> <li>• 8GB GDDR5 GPU Memory</li> <li>• OpenGL 4.5</li> <li>• DirectX® 12</li> <li>• Vulkan compatible</li> <li>• NVIDIA VRWorks™</li> <li>• CUDA™, OpenCL, Direct</li> <li>• Compute compatible</li> </ul> <b>Microsoft Hybrid Graphics Mode</b> <ul style="list-style-type: none"> <li>• Supports 4 active displays</li> </ul>	
<b>WARRANTY</b>	1-Year Limited*	3-Year Limited*	3-Year Limited*

#### ADDITIONAL FEATURES:

##### BIOS

- 64Mb SPI Flash ROM
- AMI BIOS

##### POWER MANAGEMENT

- ACPI v5.0, Suspend to RAM (S3)
- Suspend to disk (S4)
- Soft off (S5)
- Battery low suspend, Wake on LAN (S5)
- Wake on USB (S3)
- Wake on RTC alarm (S4)

##### LED INDICATORS

Power/Status, Battery, HDD, Airplane Mode, Camera

##### CERTIFICATES

FCC Class B, CE, cTUVus, TUV, CB, RoHS

##### ENVIRONMENTAL SPECIFICATIONS

###### Temperature:

- Operating: 5°C ~ 35°C
- Non-Operating: -20°C ~ 60°C

###### Relative Humidity:

- Operating: 20% ~ 80%
- Non-Operating: 10% ~ 90%

##### COMMUNICATION

- Built-in 10/100/1000 BASE-T Ethernet
- Intel® Dual Band Wireless-AC 8265, 2 × 2 AC + BT 4.2 M.2 2230 (Windstorm Peak)

##### WEB CAM

2.0MP FHD video camera

##### POWER SUPPLY

Full Range AC adapter, AC in 100~240V, 50~60Hz, DC output 19.5V, 7.7A, 150W

##### BATTERY

Embedded 4 cell Li-Polymer battery pack, 55WH; Battery life: 300 minutes (with UMA mode, 55WH battery)

##### SECURITY

- Kensington® Lock Slot
- Secure Touchpad with TPM 2.0 fingerprint scanner

##### OS SUPPORT

Windows® 10 Pro 64-bit

##### LAPTOP DIMENSIONS

14.96" × 9.8" × 0.73"  
(380mm x 248mm x 18mm)

##### WEIGHT

4.8 lbs. (2.2kg)

## FEATURES

### KEYBOARD & POINTING DEVICE

- English full size keyboard and numeric keypad with LED backlighting
- Touchpad with built in TPM fingerprint sensor

### MAUDIO

#### SOUND BLASTER® X-FI® MB5

- High Definition Audio
- S/PDIF digital output
- Built in array microphone
- Built in dual speakers
- ANSP™ 3D sound technology on headphone output

### I/O PORTS

#### LEFT:

- Security lock slot
- DC power connector
- HDMI™ 2.0 with HDCP
- 2× Mini DisplayPort 1.3 ports
- 2× Type-C USB 3.1 Gen 2 ports
- 2× USB 3.1 Gen 1 ports

#### RIGHT:

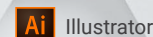
- 3.5mm 2-in-1 Audio Jack (Microphone S/PDIF optical output)
- USB 3.1 Gen 1 port
- 6-in-1 Card Reader
- RJ-45 LAN port

### CARD READER

#### 6-in-1 Card Reader Supports:

- MMC / RS PhotoShopPremiere ProAfter EffectsIllustrator MMC
- SD / mini SD / SDHC / SDXC up to UHS-II

## CERTIFIED BY INDEPENDENT SOFTWARE VENDORS



Illustrator



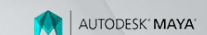
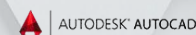
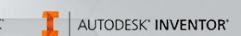
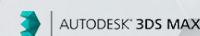
Premiere Pro



After Effects



PhotoShop



For more information, contact a PNY account manager at 1-888-333-3657 or email: [GOPNY@PNY.COM](mailto:GOPNY@PNY.COM)

Visit [www.pny.com/mws-warranty](http://www.pny.com/mws-warranty) for warranty details.

PNY Technologies, Inc. 100 Jefferson Road, Parsippany, NJ 07054 | Tel 973-515-9700 | Fax 973-560-5590 | [WWW.PNY.COM/PNYPRO](http://WWW.PNY.COM/PNYPRO)

Features and specifications subject to change without notice. The PNY logo is a registered trademark of PNY Technologies, Inc. All other trademarks are the property of their respective owners. © 2018 PNY Technologies, Inc. All rights reserved.

\* Features and specifications subject to change without notice. Adobe certification applies to the P4000 and P3000 Graphics Processor.