

PNY

# PNY GEFORCE RTX™ 5060 TI 16GB

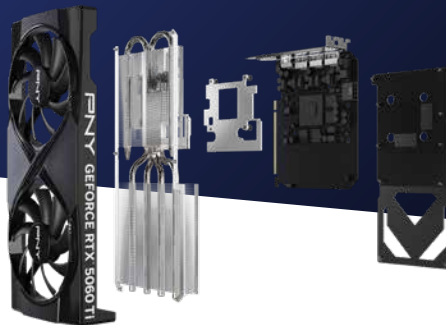
Overclocked Dual Fan DLSS 4

VCG5060T16DFXPB1-O



## GAME CHANGER

Get game-changing performance with the GeForce RTX™ 5060 Ti 16GB, powered by NVIDIA® Blackwell. Game at high frame rates with DLSS 4, supercharge your creativity with NVIDIA Studio, and enable new experiences with the power of AI.



### NVIDIA Blackwell Architecture

The Ultimate Platform for Gamers and Creators

### Fifth-Gen Tensor Cores

Max AI performance with FP4 and DLSS 4

### Fourth-Gen Ray Tracing Cores

Built for Mega Geometry



### DUAL FAN COOLING

With two fans working together, heat is distributed and dissipated efficiently across a compact design.



### METAL BACKPLATE

Adds additional support to prevent the card from sagging and vents that enhance passive cooling

## KEY FEATURES

- NVIDIA DLSS 4
- NVIDIA Reflex 2
- GDDR7 Graphics Memory
- NVIDIA® App
- PCI Express® Gen 5
- NVIDIA Broadcast

## SYSTEM REQUIREMENTS

- PCI Express Gen 5-compliant motherboard with one 2-width x8 graphics slot
- One 8-pin supplementary power connector
- 600 W or greater system power supply<sup>2</sup>
- Microsoft Windows® 11 64-bit, Windows® 10 64-bit, Linux 64-bit
- Internet connection<sup>1</sup>

## PRODUCT SPECIFICATIONS

NVIDIA® CUDA Cores	4608
Clock Speed	2407 MHz
Boost Speed	2692 MHz
Memory Speed (Gbps)	28
Memory Size	16GB GDDR7
Memory Interface	128-bit
Memory Bandwidth (GB/s)	448
TDP	180 W
Outputs	DisplayPort 2.1b with UHBR20 (x3), HDMI 2.1b
Multi-Screen	4
Resolution	4K 480Hz or 8K 165Hz with DSC
Power Input	1x8
Bus Type	PCI-Express 5.0 x8

## PRODUCT INFORMATION

PNY Part Number	VCG5060T16DFXPB1-O
UPC Code	751492795072
Card Dimensions	9.65" x 4.72" x 1.57"; 2 Slot 245 x 120 x 39.9mm; 2 Slot
Box Dimensions	12.68" x 7.05" x 2.76" 322 x 179 x 70mm

1 Graphics Card driver is not included in the box; NVIDIA App will download the latest GeForce driver from the Internet after install.

2 Minimum is based on a PC configured with a Ryzen 9 5900X processor. Power requirements can be different depending on system configuration.

PNY Technologies, Inc. 100 Jefferson Road, Parsippany, NJ 07054 | Tel 973-515-9700 | Fax 973-560-5590 | [WWW.PNY.COM](http://WWW.PNY.COM)

Features and specifications subject to change without notice. The PNY logo is a registered trademark of PNY Technologies, Inc. All other trademarks are the property of their respective owners. © 2025 PNY Technologies, Inc. All rights reserved.

©2025 NVIDIA Corporation. NVIDIA, the NVIDIA logo, GeForce, GeForce Experience, GeForce RTX, and G-SYNC are registered trademarks and/or trademarks of NVIDIA Corporation in the United States and other countries. All other trademarks and copyrights are the property of their respective owners.

PNY

