

PNY®



PNY ELITE-X TYPE-C USB 3.2 DRIVE  
PNY DUO LINK USB 3.2 TYPE-C DUAL DRIVE

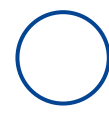
PNY®



PNY ELITE-X TYPE-C USB 3.2 DRIVE  
PNY DUO LINK USB 3.2 TYPE-C DUAL DRIVE

PNY TYPE-C USB 3.2 DRIVES

# HOW TO ACCESS YOUR PNY TYPE-C DRIVE ON THE iPhone® 15



## STEP 1

**PLUG ELITE-X TYPE-C OR DUO LINK TYPE-C DRIVE INTO YOUR MOBILE DEVICE**

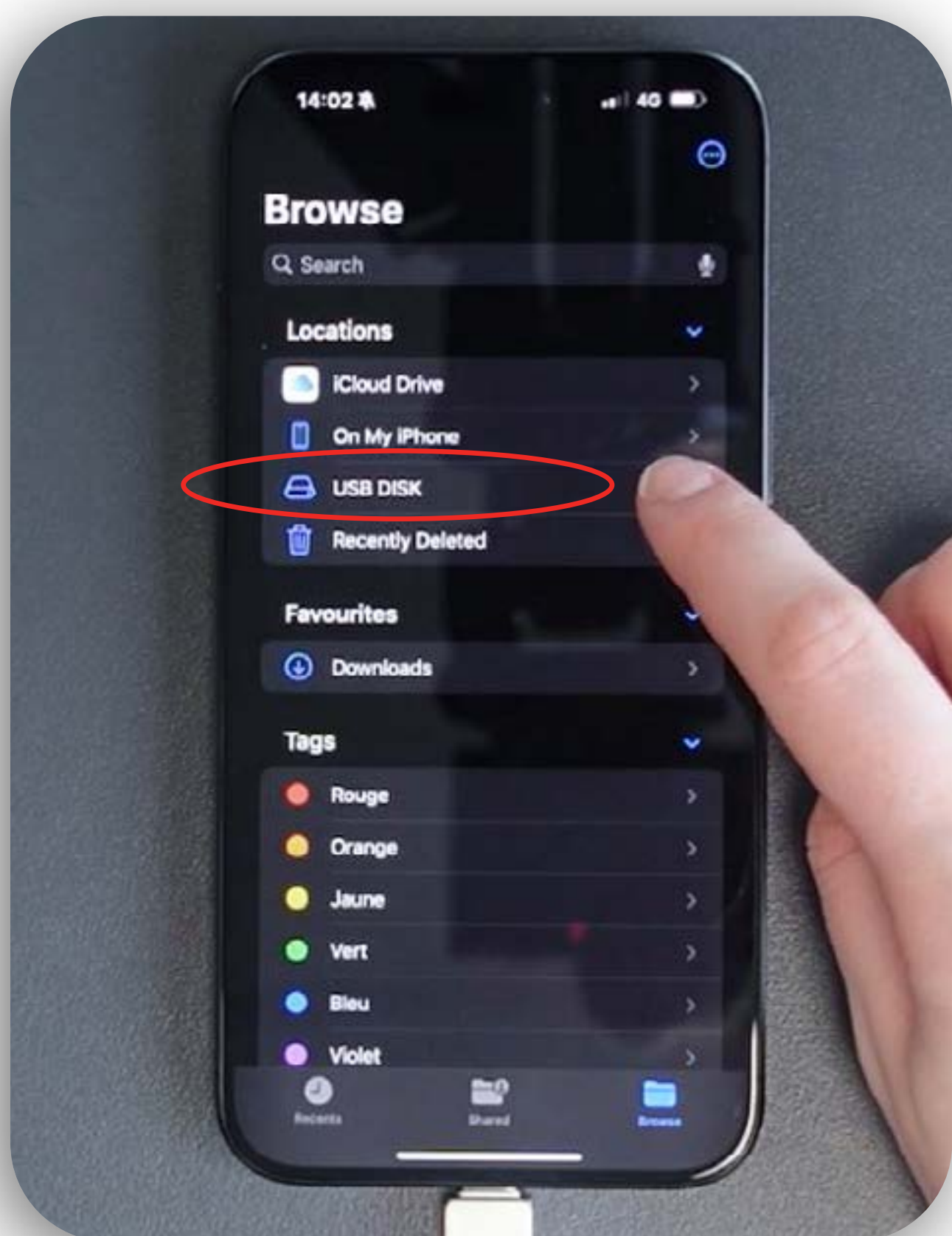


## STEP 2

**OPEN THE 'FILES' APPLICATION ON YOUR MOBILE DEVICE**

PNY TYPE-C USB 3.2 DRIVES

# HOW TO ACCESS YOUR PNY TYPE-C DRIVE ON THE iPhone® 15



## STEP 3

**UNDER 'LOCATIONS' SELECT 'USB DISK'**



## STEP 4

**NOW YOU CAN ACCESS AND MANAGE THE FILES ON YOUR PNY TYPE-C DRIVE**

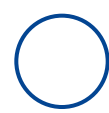
PNY®



PNY ELITE-X TYPE-C USB 3.2 DRIVE  
PNY DUO LINK USB 3.2 TYPE-C DUAL DRIVE

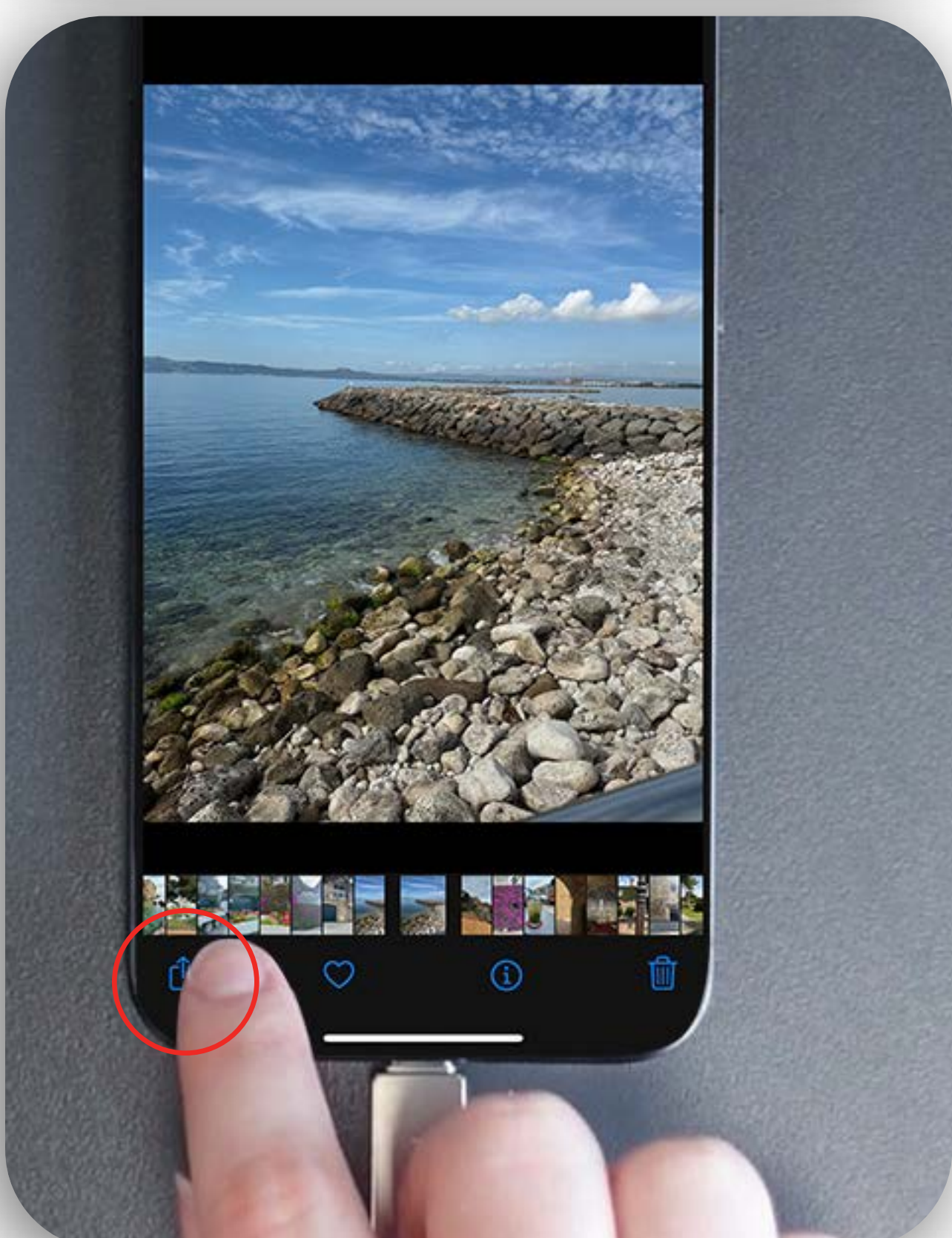
PNY TYPE-C USB 3.2 DRIVES

# HOW TO TRANSFER CONTENT FROM iPhone® 15 TO YOUR DRIVE



## STEP 1

**LOCATE THE FILE YOU WANT TO MOVE**

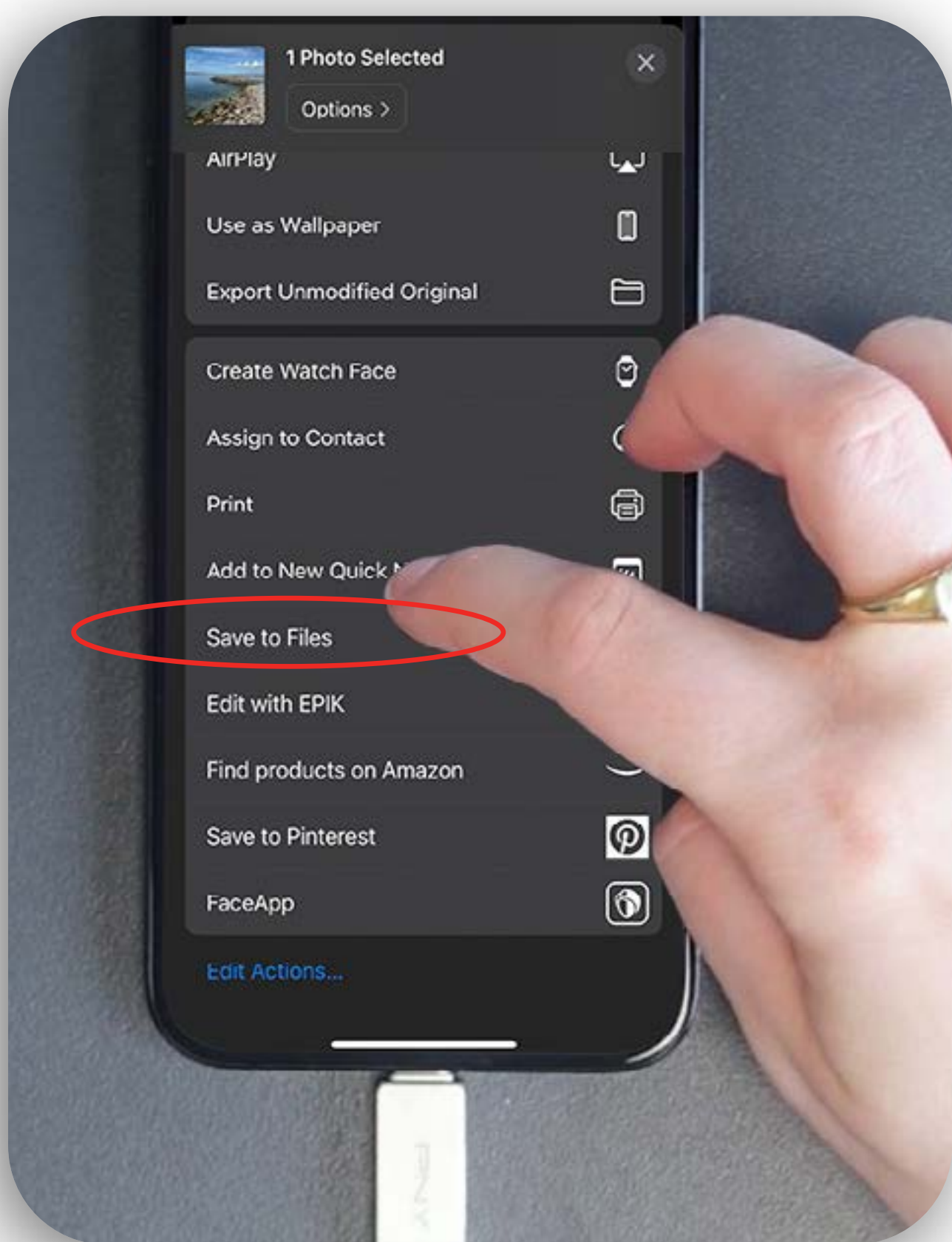


## STEP 2

**SELECT THE 'MOVE' ICON AT THE BOTTOM LEFT CORNER**

PNY TYPE-C USB 3.2 DRIVES

# HOW TO TRANSFER CONTENT FROM iPhone® 15 TO YOUR DRIVE



## STEP 3

**SCROLL DOWN ON THE MENU POP-UP AND SELECT 'SAVE TO FILES'**

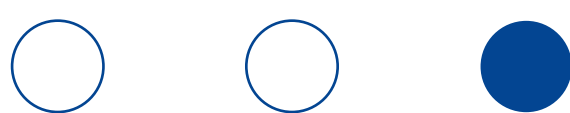


## STEP 4

**NAVIGATE TO YOUR TYPE-C DRIVE BY SELECTING 'BROWSE' IN THE TOP LEFT CORNER**

PNY TYPE-C USB 3.2 DRIVES

# HOW TO TRANSFER CONTENT FROM iPhone® 15 TO YOUR DRIVE



## STEP 5

**SCROLL TO FIND 'USB DISK' AND SELECT**



## STEP 6

**HIT 'SAVE' IN THE TOP RIGHT CORNER. ONCE SAVED, A DUPLICATE OF THE FILE WILL BE SAVED TO YOUR TYPE-C DRIVE**